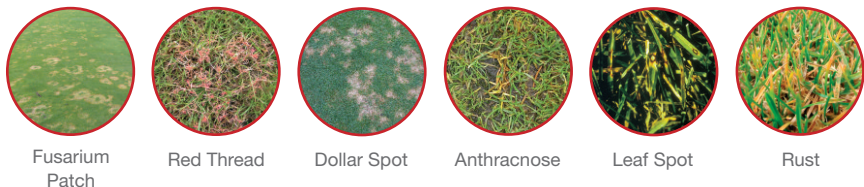


- ✓ **Unique StressGard™ Formulation Technology**
- ✓ **Contact and mesostemic turf fungicide**
- ✓ **Unsurpassed\* control against 6 key turf diseases**
- ✓ **Can be used all year round**



### Diseases Controlled

INTERFACE® delivers unsurpassed\* disease control against 6 key turf diseases. INTERFACE® is our first turf fungicide with Stressgard™ Formulation Technology. The formulation has been fine tuned to upgrade the performance of the product, providing superior disease control leading to visibly healthier turf.



### Areas of use

- Golf courses
- Professional sports grounds/stadiums
- Bowls greens
- Cricket pitches
- Lawn tennis courts
- Lawns

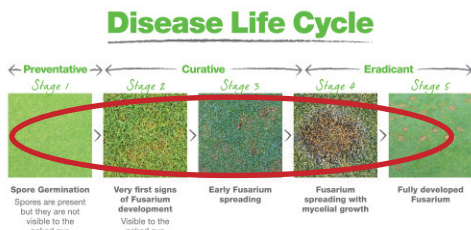
\*Compared to Bayer's existing fungicides.

### Timing of Application

INTERFACE® can be applied during the spring/summer/autumn when turf is actively growing; during the winter when turf is slow growing or near dormant; or at times of increased disease stress. For best results apply just before or at the first signs of disease.

### Unique Packaging

INTERFACE® comes in our unique smartline pack for improved handling and better performance.



### Application rates

Add the required quantity of INTERFACE® to the half-filled spray tank with the agitation system in operation and then fill to the required level. Continue agitation at all times during spraying until the tank is completely empty. Spray immediately after mixing. This aids the effective mixing for all fungicides.

**After use**  
Wash equipment thoroughly after use.

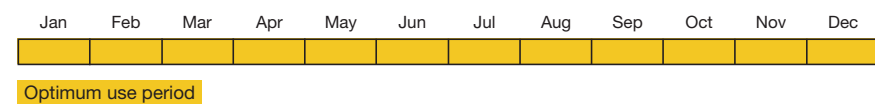
### Disease Management

INTERFACE® can be applied as part of an IDM approach and can be integrated into your existing turf fungicide program to ensure rotation of fungicide groups. It is a perfect partner for CHIPCO® GREEN or DEDICATE®.

Application equipment			
Vehicle-mounted Hydraulic Sprayer (use White 08F110 WH nozzle*)		Knapsack Sprayer (use White DT 4.0 or White 08F110 WH nozzle*)	
Rate per hectare	Water per hectare	Rate per 100m <sup>2</sup>	Water per 100m <sup>2</sup>
10 L	400-600 L	100 ml	4-6 L
		Rate per 500m <sup>2</sup>	Water per 100m <sup>2</sup>
		500 ml	20-30 L

\*See Spray Targeting section on page 65

### Main Usage Period



INTERFACE® CONTAINS 256g/L IPRADIONE AND 16g/L TRIFLOXYSTROBIN. USE PLANT PROTECTION PRODUCTS SAFELY. ALWAYS READ THE LABEL AND PRODUCT INFORMATION BEFORE USE. PAY ATTENTION TO THE RISK INDICATIONS AND FOLLOW THE SAFETY PRECAUTIONS ON THE LABEL. (MAPP 16060)

**PACK SIZES AVAILABLE:**  
5L covers 5000m<sup>2</sup>

Interface® is a registered trademark of Bayer CropScience Limited. Photographs courtesy of STRI. Bottle illustration shown is not representative of final production sample.

[www.escience.bayercropscience.co.uk](http://www.escience.bayercropscience.co.uk)  
[www.interfacefungicide.com](http://www.interfacefungicide.com)