

Pistol®



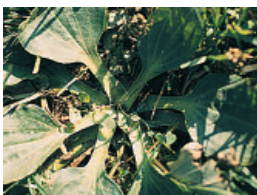
Contains 40 g/l diflufenican and 250 g/l glyphosate.

Total Herbicides

- ★ **One application gives over 6 months weed control**
- ★ **Excellent safety profile - Non-hazardous/Non-irritant for the operator**
- ★ **Rainfast within 1 hour**
- ★ **Resilient - controls most diuron resistant weeds**



Groundsel



Greater Plantain



Annual Meadowgrass

Weeds Controlled

PISTOL® is a barrier acting non-selective total herbicide for the control of a wide range of annual and perennial broad-leaved weeds and grasses on soft and gravel surfaces in amenity situations.

PISTOL® is a suspension concentrate formulation containing 250 g/l glyphosate and 40 g/l diflufenican.

PISTOL® has foliar absorbed translocated activity, combined with soil acting properties, providing pre-emergence weed control.

The product is applied post emergence to control a wide range of annual and perennial broad-leaved weeds and grasses on porous surfaces on land not intended to bear vegetation.

PISTOL® will give initial 'knockdown' and there after residual control of a wide variety

of broad-leaved weeds and narrow-leaved weeds. Some examples of these weeds include Common Daisy, Groundsel, Cranesbill, Dandelion, Forget-me-not, Ragwort, Red-deadnettle, Rosebay Willowherb, Thistles, Speedwell and Annual Meadowgrass. PISTOL® controls these weeds for over 6 months.

PISTOL® may be used on hard surfaces (Republic of Ireland only), soft surfaces and gravel amenity surfaces. These areas include:

- Industrial areas
- Fence lines
- Around obstacles (street furniture, signage)
- Beneath pylons
- Road edges
- Tree ringing mature trees
- Open soil areas
- Railway ballast

Timing of Application

Apply PISTOL® post-emergence of weeds at any time from March until the end of October, provided that the weeds are actively growing. Annual broad-leaved weeds should have at least two fully exposed leaves, and annual grasses should be at the one leaf growth stage or beyond. Some perennial weeds, including Docks, Perennial Sow Thistle and Willowherb are best treated just before flowering or the setting of seed.

Half fill sprayer with clean water. Add the required quantity of PISTOL® and complete filling. This aids the effective mixing for all Total Herbicides.

Drift

Avoid drift as much as possible by keeping the nozzles at the correct height and working only under conditions of little or no wind. Small amounts of PISTOL® spray may cause serious injury to herbaceous plants and fruit and vegetable crops.

Application rates

Equipment	Area	Product Required	Water Volume
Vehicle tanked sprayer	1 ha	4.5 L	200 - 260 L
Knapsack	100m ²	45 ml	2.5 - 10 L

A knapsack fitted with a flat fan nozzle or similar, using a pressure of around 1-2 bar is recommended. Good and even coverage of foliage and soil is essential for optimum activity. For larger areas, hydraulic sprayers can be used to apply this product.

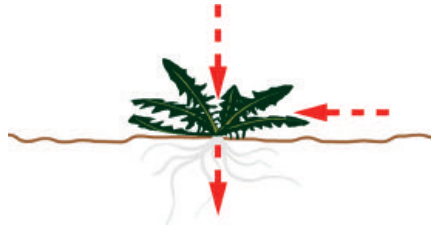
Recommended nozzles

ISO White 08F110 WH for knapsacks or power sprayers. ISO White DT 4.0 alternatively for knapsacks.

After use

Wash equipment thoroughly after use.

How does Pistol® work?



Glyphosate circulates throughout the entire plant causing rapid knockdown and kill



Diflufenican adheres to surface to form barrier preventing germination

ALWAYS READ THE LABEL. USE PESTICIDES SAFELY.
(MAPP 12173) (PCS 02530)

PACK COVERAGE:

1 LITRE COVERS 2,222 m²

5 LITRES COVERS 11,110 m²

Pistol is a registered trademark of Bayer CropScience Limited.

Full product information, label text
and MSDS are available for download
from www.bayer-escience.co.uk



Also available
in 1 litre
packs for
UK only

